

BRIO COMBINATION THERAPY SYSTEM

Brio Combination is a Multi-channel Electrotherapy device..... One point solution to your complete electrotherapy treatment



Single unit, multiple treatment at one go, thanks to two independent channel stimulations and one channel ultrasound of 1 Mhz, 3 Mhz and Dynamic

Large colour touch screen

Library for Clinical Pathology
- A convenient and comprehensive treatment guide for you.

Anatomy Library
- Extensive Anatomical library that illustrates wide variety of pathologies

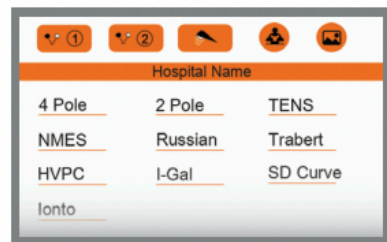
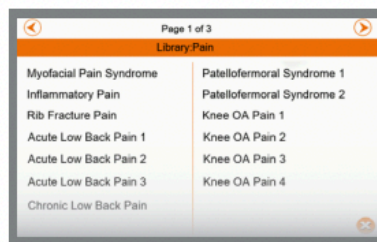
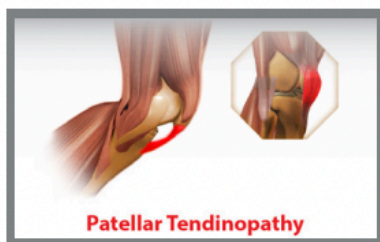
All ultrasound features are same as that of BRIO Dynamic Ultrasound

Electrotherapy

- All major currents including 4 pole, Vectors (40% & 100%), 2 pole, TENS, Russian, interrupted galvanic, Faradic, Iontophoresis, NMES, HVPC & Trabert
- SD Curve
- Anti accommodation mode for uniform treatment experience

COMBINATION THERAPY,

- Combination of Ultrasound and Electrotherapy will save time and provide effective treatment on pain and tissue repair in less time.



STANDARD SCOPE OF SUPPLY :

- 28000 BRIO Combination Therapy Unit

ACCESSORIES

- 26128 Stim Lead Wire x 2
- 00991 Stim Rubber Electrode x 4
- 00989 Sticking Electrode pack of 4 x 1
- 00994 Elastic Strap x 2
- 05128 Ultrasound Applicator 5 cm² x 1
- 09115 Mains Cable x 1
- 00988 Jelly Bottle x 1

OPTIONAL ACCESSORIES :

- 28103 HANDS FREE Ultrasound applicator system
- 28105 BRIO stylish Sling bag

